



# Elabscience

## Elabscience Flow Cytometry Antibodies

With selected high-quality FCM monoclonal antibodies and excellent fluorescent labeling technology, Elabscience® FCM antibodies are dedicated to your cell detection and related experiments.

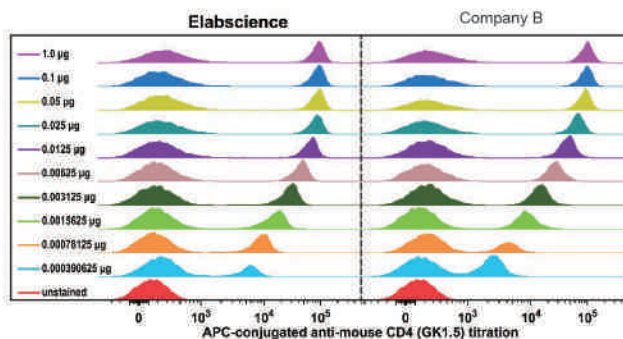
At the same time, Elabscience® offers panel design for customer.

### [ Advantages ]

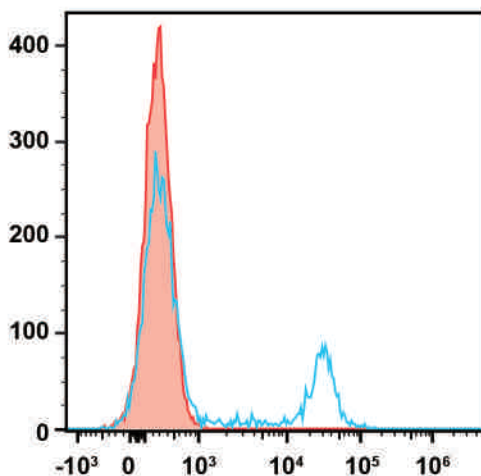
#### Extraordinary performance in multicolor FCM experiment

Signals of positive cell groups in all detecting channels can be identified distinctly from those of the corresponding negative groups when 6-color flow cytometry experiment is carried out.

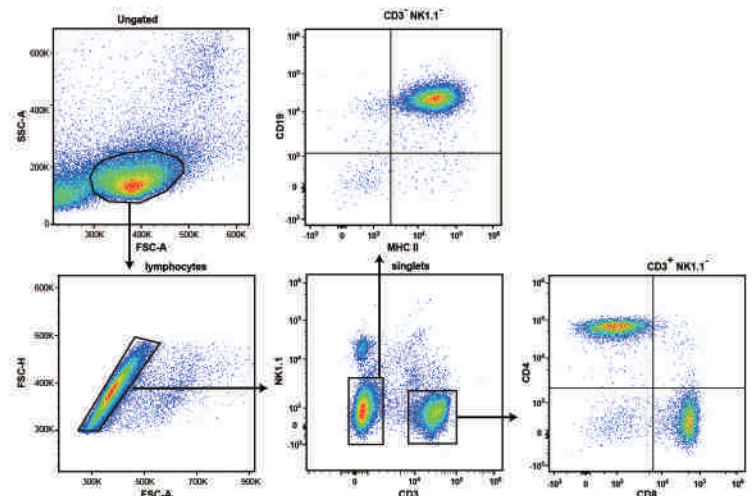
A good separation effect can be achieved under multiple concentration gradients



Optimizing fluorescence coupling technique to reduce the background of FCM dyeing

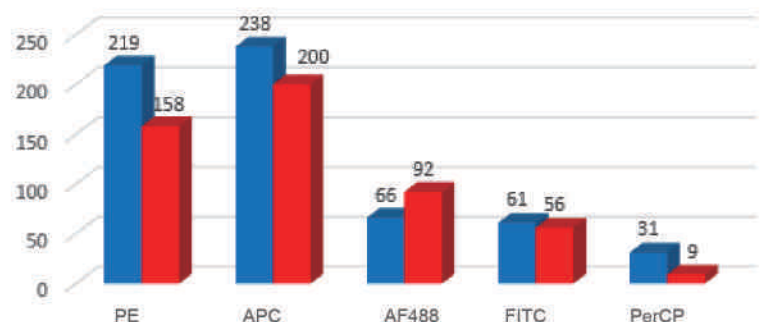


Filled red curve are unstained cells.  
Empty blue curve are stained with PE anti-Human CD8a



#### Advanced labeling technology to guarantee experiment result

Considerable SI (staining index) which is comparable to that of well-known international manufacturers.



SI of anti-mouse CD4

The higher staining index, the better separation effect of negative and positive cell groups.

**Elabscience®**

Elabscience Biotechnology Inc.

Web: [www.elabscience.com](http://www.elabscience.com)

Tel: 1-240-252-7368

Fax: 1-240-252-7376

Email: [techsupport@elabscience.com](mailto:techsupport@elabscience.com)

★ Elabscience® has antibodies with 10 dyes now and more colors are coming!

FITC	PE	APC	PerCP	PE/Cy5	PE/Cy7	PE/Cy5.5	PerCP/Cy5.5	AF 488	AF 647
------	----	-----	-------	--------	--------	----------	-------------	--------	--------

★ Elabscience® has selected commonly used clones as antibody source for FCM antibodies, providing variable targets with anti-Human/ Mouse/ Rat.

#### [ Anti-Human ]

CD10	CD107a	CD117	CD11a	CD11b	CD11c	CD122	CD123	CD127	CD13	CD134	CD138	CD14
CD147	CD15	CD154	CD16	CD161	CD18	CD183	CD184	CD19	CD196	CD197	CD1a	CD2
CD20	CD200	CD206	CD21	CD22	CD235	CD24	CD25	CD27	CD273	CD279	CD28	CD29
CD3	CD303	CD31	CD32	CD326	CD33	CD34	CD35	CD36	CD37	CD38	CD4	CD40
CD41	CD44	CD45	CD45RA	CD45RO	CD47	CD48	CD49d	CD5	CD53	CD54	CD55	CD56
CD57	CD58	CD61	CD62L	CD64	CD69	CD7	CD74	CD8	CD81	CD83	CD86	CD9
CD90	CD95	FOXP3	HLA-A/B/C	HLA-DR	IFN- $\gamma$	IgD	IgM	IL-10	IL-17A	IL-2	IL-21	IL-4
IL-5	IL-6	Notch3	PD-L1	TCR $\gamma/\delta$	Ig light chain $\kappa$	Ig light chain $\lambda$						

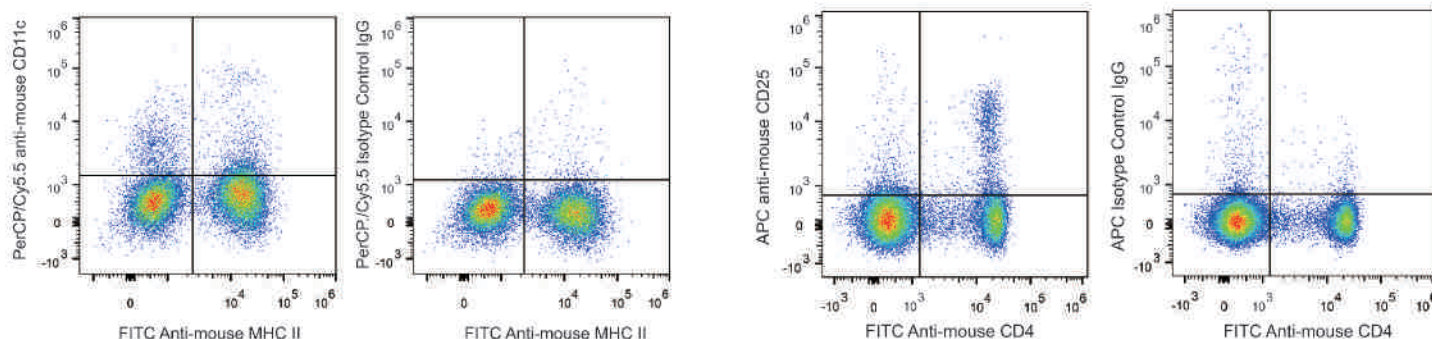
#### [ Anti-Mouse ]

CD103	CD106	CD115	CD117	CD119	CD11a	CD11b	CD11c	CD120b	CD122	CD127	CD132	CD14
CD150	CD16/32	CD162	CD18	CD183	CD19	CD1d	CD206	CD209b	CD210	CD22	CD23	CD24
CD25	CD272	CD279	CD28	CD29	CD3	CD31	CD326	CD335	CD366	CD38	CD3 $\epsilon$	CD4
CD40	CD41	CD44	CD45	CD45.1	CD45.2	CD45R	CD47	CD48	CD49b	CD5	CD54	CD62L
CD64	CD69	CD71	CD73	CD80	CD86	CD8a	CD90	CD90.1	CD90.2	F4/80	Fc $\epsilon$ RI $\alpha$	Foxp3
Gr-1	I-A/I-E	IFN $\gamma$	IgD	IgM	IL-10	IL-17A	IL-2	IL-4	IL-5	IL-6	Ly6AVE	Ly6C
Ly6G	NK1.1	PD-L1	TCR $\gamma/\delta$	TCR $\beta$	TER-119							

#### [ Anti-Rat ]

CD4 CD47 CD8a Foxp3

★ Results of Elabscience FCM Antibodies.



>> We are constantly developing new products to provide new tools for your Flow Cytometry experiments.  
Please visit our website, [www.elabscience.com](http://www.elabscience.com) for up-to-date details on all the products we have.  
For ordering, please email to [orders@elabscience.com](mailto:orders@elabscience.com).

**Elabscience®**

**Elabscience Biotechnology Inc.**

Web: [www.elabscience.com](http://www.elabscience.com)

Tel: 1-240-252-7368

Fax: 1-240-252-7376

Email: [techsupport@elabscience.com](mailto:techsupport@elabscience.com)